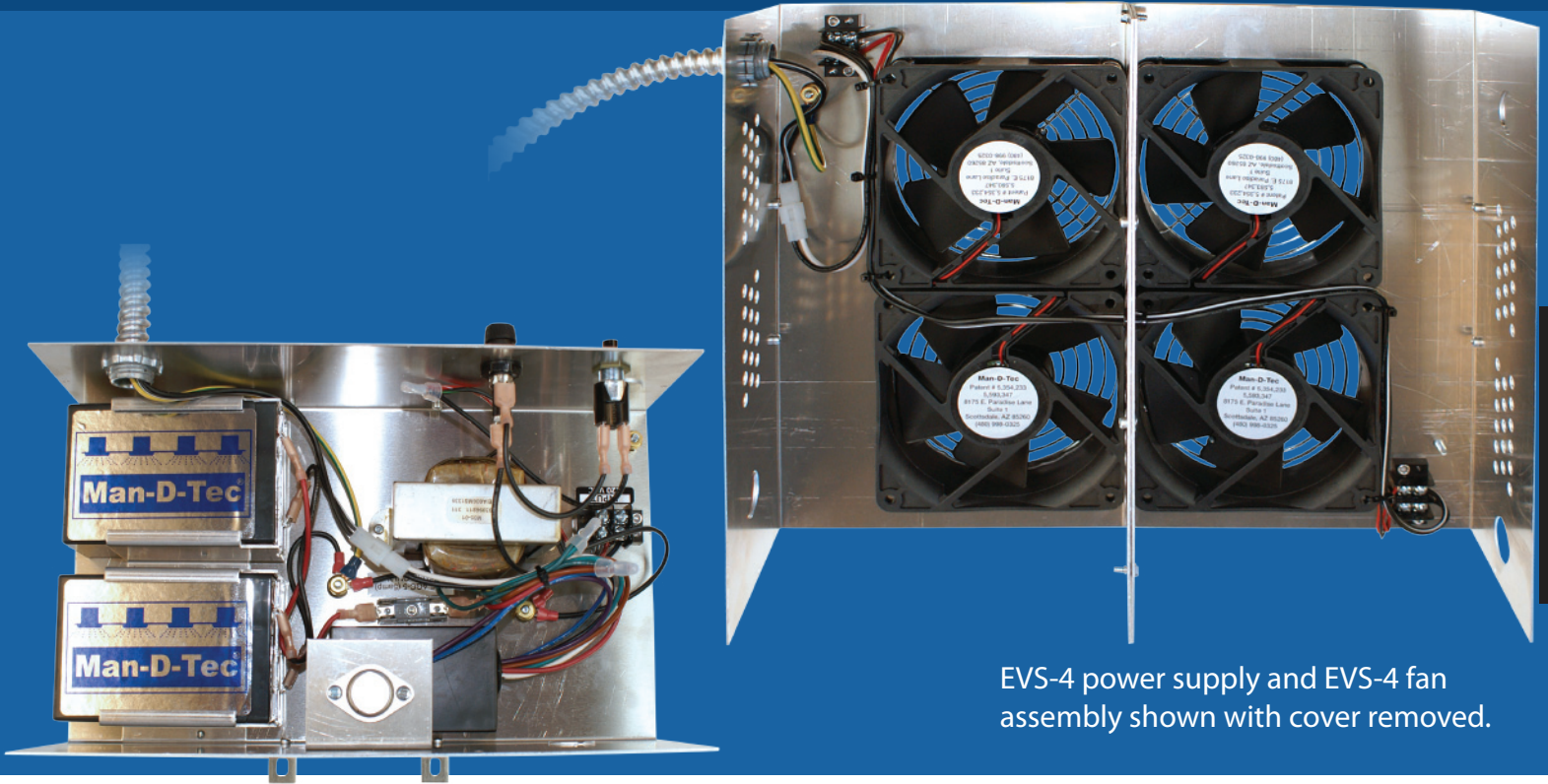




EVS
 REVISION: E
 EFFECTIVE: 9/2013

EVSTM-2, EVSTM-3 & EVSTM-4

VENTILATION FOR ELEVATORS



EVS-4 power supply and EVS-4 fan assembly shown with cover removed.

VENTILATION / FANS

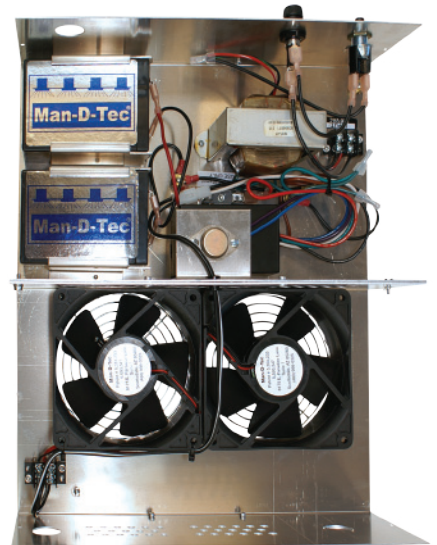
EVS-2, EVS-3, & EVS-4

EVS-2, EVS-3, & EVS-4 by Man-D-Tec

NORMAL AND EMERGENCY VENTILATION FOR GLASS ELEVATORS AND CLOSED HATCHWAYS

The EVS line of fan assemblies is designed to surpass code requirements of one (1) hour of CONTINUOUS emergency ventilation by providing up to five (5) hours of continuous operation. In addition, the fans only produce 41 dB at maximum air flow, with sound levels being much lower during normal temperature operation because of internal sensors. This entire unit is CSA-listed.

Product Specifications on the back of page.



EVS-2 unit shown above with cover removed.

FOR OPTIONS SEE
ACCESSORIES



1.800.944.6263
WWW.MANDTEC.COM

EVS-2, EVS-3, & EVS-4 SPECIFICATIONS

Enclosure (EVS-2)

MATERIAL	.060 Aluminum	
DIMENSIONS	12" x 14" x 4" (Fans & Power Supply) 9.75" - 11.50" Dia	Overall Dimensions Cutout Hole
<i>Uses fan grille part number FG-12-W (see Accessories section)</i>		

PERFORMANCE Up to 200 CFM

Enclosure (EVS-3 & EVS-4)

MATERIAL	.060 Aluminum	
DIMENSIONS	12" x 7" x 4" Power Supply 12" x 14" x 4" Fan Assembly 9.75" - 11.50" Dia	Overall Dimensions Overall Dimensions Cutout Hole
<i>Uses fan grille part number FG-14-W (see Accessories section)</i>		

PERFORMANCE Up to 400 CFM for EVS-4 (up to 300 CFM for EVS-3)

CERTIFICATION(S)

CSA LISTED (ENTIRE FAN AND POWER SUPPLY UNIT is CSA listed, NOT just components!!!)

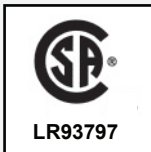
CSA TESTED to the following standards:
 CSA Std C22.2



VENTILATION / FANS

Power Supply

CHARGER	Automatic	Maintains peak battery condition
BATTERY	High Capacity, Sealed, 12 volt, Maintenance-Free, Long Life Exceeds ASME A17.1-2010/CSA B44-10 One (1)-hour runtime code requirement for emergency ventilation	
INPUT	115 VAC (220 VAC models available)	
OUTPUT	12 VDC	
TEST SWITCH	Verifies system function	



Features

Fans contain internal temperature control to regulate air flow (60% air flow at 73 F, and 100% air flow at 80 F) providing quiet operation.

Eliminates the need for a 2 or 3-speed fan.

High capacity power supply surpasses code requirements of one (1) hour of CONTINUOUS emergency ventilation, by providing up to five (5) hours of continuous operation



MAN-D-TEC, INC.
 8175 E. PARADISE LANE P. 480.998.0325
 SCOTTSDALE, AZ 85260 F. 480.998.0318

1.800.944.6263
WWW.MANDTEC.COM