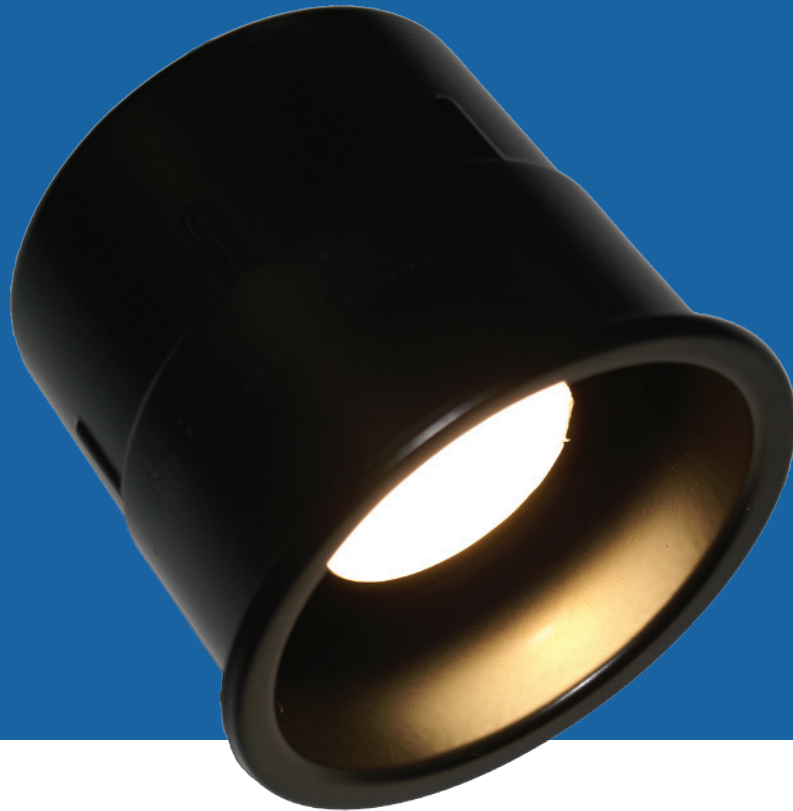




H-DL™
REVISION: G
EFFECTIVE: 9/2013

H-DL™ (HALOGEN)

HALOGEN DOWNLIGHT FOR ELEVATORS



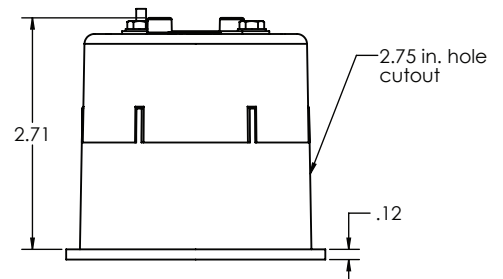
**PATENTED
PRODUCT**

HALOGEN H-DL by Man-D-Tec®

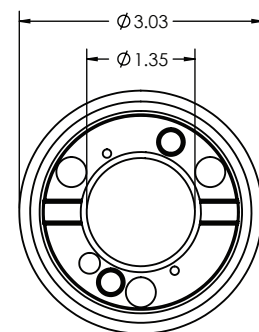
**PATENTED, HIGH PERFORMANCE DOWNLIGHTING SYSTEM,
DESIGNED SPECIFICALLY FOR ELEVATOR APPLICATIONS.**

The halogen system from Man-D-Tec revolutionized the industry and has been the industry standard for nearly 20 years. Fixtures include 20-watt halogen lamps. Systems include a dimmer control and prewired harnesses for easy installation.

Product Specifications on the back of page.



SIDE VIEW



TOP VIEW

FOR OPTIONS SEE
ACCESSORIES



1.800.944.6263

WWW.MANDTEC.COM

H-DL™

REVISION: G

EFFECTIVE: 9/2013

H-DL™
SPECIFICATIONSFixture
(H-DL)**MATERIAL** Aluminum Die Casting

DIMENSIONS	2.53"	Overall Height
	2.75"	Cutout Hole
	3.03"	Overall Diameter

**MOUNTING** Retainer Clamp w/ "L" Bracket to Prevent Fixture Rotation

FINISHES	Black	Powder Coat STANDARD
	Brushed	#4 Silver Brushed Finish (Option)
	Polished	High Luster #8 Mirror Finish (Option)
	White	Powder Coat (Option)
	Gold	Powder Coat (Option)

SOCKET Dual contact bayonet base

BULB	Wattage	20 Watt protective coated halogen (Part #H-20™)
	Reflector	Aluminum
	Front Glass	Frosted safety glass w/ protective coating
	Base	Dual contact, bayonet base

Power
Supply**MATERIAL** .060 Aluminum**DIMMER** INCLUDED

VOLTAGE	Input:	115 VAC (220VAC Also Available)
	Output:	12VAC

DIMENSIONS 12"L x 7"W x 4"H

Wiring

SECONDARY (OUTPUT) Pre-harnessed with quick connects at power supply and at each fixtureEmergency
(Optional)**ELS®-400**

Powers (2) two H-DL fixtures to meet ANSI 17.1 & ASME 17.3-2008 Elevator Code.

EXCEEDS A17.3 4-HOUR RUNTIME CODE REQUIREMENT FOR EMERGENCY LIGHTING.**MAN-D-TEC, INC.**8175 E. PARADISE LANE
SCOTTSDALE, AZ 85260**P.** 480.998.0325**F.** 480.998.0318

1.800.944.6263

WWW.MANDTEC.COM