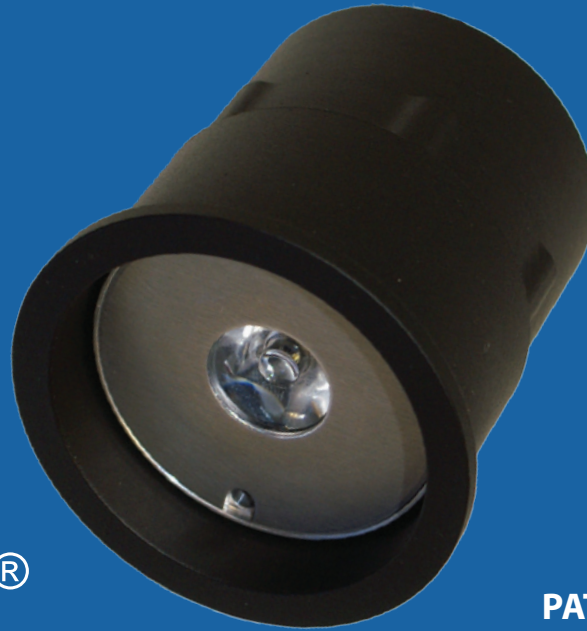




MINILED  
REVISION: 1  
EFFECTIVE: 9/2013

# MINI-LED<sup>®</sup>

LED DOWNLIGHT FIXTURES FOR ELEVATORS



## Mini-LED<sup>®</sup>

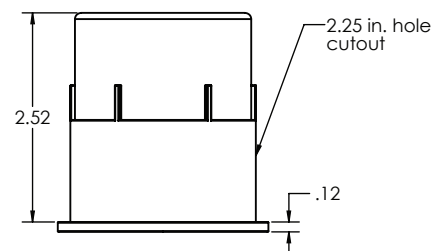
**PATENTED  
PRODUCT**

### MINI-LED by Man-D-Tec<sup>®</sup>

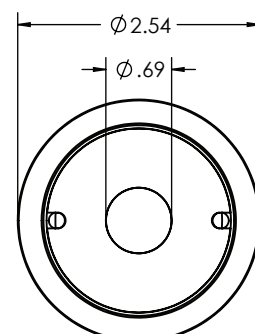
**PATENTED, HIGH PERFORMANCE LED LIGHTING SYSTEM,  
DESIGNED SPECIFICALLY FOR ELEVATOR APPLICATIONS.**

Warm white 3 watt LED output per fixture. The small, compact design allows for multiple fixtures to be used. The small fixture diameter and patented, easy-mount design is the same as our Minilite<sup>®</sup> incandescent series, allowing existing ceilings to be reused for upgrading to our MiniBeam LED systems. Systems include a dimmer control and prewired harnesses for easy installation.

*Product Specifications on the back of page.*



SIDE VIEW



FRONT VIEW



448D  
ELEVATOR CONTROL,  
ELEVATOR ACCESSORY  
E329545

1.800.944.6263

WWW.MANDTEC.COM

## MINILED

REVISION: 1

EFFECTIVE: 9/2013

# MINI-LED®

## SPECIFICATIONS

### Fixture (MINI-LED)

**MATERIAL** Aluminum Die Casting

**DIMENSIONS** 2.52" Overall Height  
2.25" Cutout Hole  
2.54" Overall Diameter

*Uses Same Hole Cutout Size as Our M-DL™ Fixtures.*



44BD  
ELEVATOR CONTROL,  
ELEVATOR ACCESSORY  
E329545

**MOUNTING** Retainer Clamp w/ "L" Bracket to Prevent Fixture Rotation

**FINISHES**  
**Black** Powder Coat **STANDARD**  
**Brushed** #4 Silver Brushed Finish (Option)  
**Polished** High Luster #8 Mirror Finish (Option)  
**White** Powder Coat (Option)  
**Gold** Powder Coat (Option)

**OUTPUT** Warm White (Approx 2,972k)  
*As per LM-79 report by an iAS Accredited Laboratory*

**LED**  
**Wattage** 3 Watts of LEDs Per Fixture  
**Reflector** Focused Lens  
**SAVE EVEN MORE! Pre-Installed Dimmer Control is Included!**  
*Adjust from 1 Watt to 3 Watts of LED Output Per Fixture*

#### TO REPLACE LED MODULE

Once Installed, unthread from fixture inside of the cab using our custom extraction tool. This allows future replacements without lowering the cab ceiling. This design is highly vandal resistant, yet allows for simple future replacement.

### Power Supply

**MATERIAL** .060 Aluminum

**DIMMER** INCLUDED

**VOLTAGE** Input: 115 VAC (220VAC Also Available)



44BD  
ELEVATOR CONTROL,  
ELEVATOR ACCESSORY  
E329545

### Wiring

**SECONDARY (OUTPUT)** Pre-harnessed with quick connects at power supply and at each fixture

### Emergency (Optional)

#### ELS-LED®-2C

Powers up to (6) six Mini-LED LED fixtures to meet ANSI 17.1 & ASME 17.3-2008 Elevator Code.

**EXCEEDS A17.3 4-HOUR RUNTIME CODE REQUIREMENT FOR EMERGENCY LIGHTING.**



#### MAN-D-TEC, INC.

8175 E. PARADISE LANE  
SCOTTSDALE, AZ 85260

P. 480.998.0325  
F. 480.998.0318

1.800.944.6263

WWW.MANDTEC.COM