



MINIBEAM

REVISION: 1

EFFECTIVE: 9/2013

MINIBEAM[®]

LED DOWNLIGHT FIXTURES FOR ELEVATORS



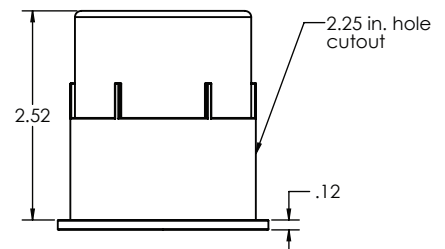
MINIBEAM[®]

**PATENTED
PRODUCT**

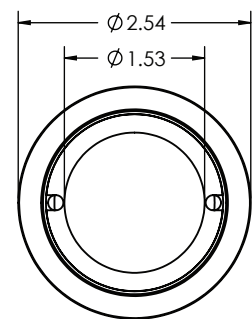
MINIBEAM by Man-D-Tec[®]

**PATENTED, HIGH PERFORMANCE LED LIGHTING SYSTEM,
DESIGNED SPECIFICALLY FOR ELEVATOR APPLICATIONS.**

Warm white 4 watt LED output that produces 179 lumens per fixture. The small, compact design allows for multiple fixtures to be used. The small fixture diameter and patented, easy-mount design is the same as our Minilite[®] incandescent series, allowing existing ceilings to be reused for upgrading to our MiniBeam LED systems. Systems include a dimmer control and prewired harnesses for easy installation. Our SmoothBeam[™] technology produces a wide angle light output with even lighting (eliminates pixilation).



SIDE VIEW



FRONT VIEW

FOR OPTIONS SEE
ACCESSORIES

FOR LIGHT CONFIGURATIONS SEE
LIGHTING MATRIX



44BD
ELEVATOR CONTROL,
ELEVATOR ACCESSORY
E329545



1.800.944.6263



WWW.MANDTEC.COM

MINIBEAM

REVISION: 1
EFFECTIVE: 9/2013

MINIBEAM[®]
SPECIFICATIONS

Fixture
(MINIBEAM)


MATERIAL	Aluminum Die Casting		 44BD ELEVATOR CONTROL, ELEVATOR ACCESSORY E329545
DIMENSIONS	2.52" Overall Height 2.25" Cutout Hole 2.54" Overall Diameter <i>Uses Same Hole Cutout Size as Our M-DL™ Fixtures.</i>		
MOUNTING	Retainer Clamp w/ "L" Bracket to Prevent Fixture Rotation		
FINISHES	Black Powder Coat STANDARD Brushed #4 Silver Brushed Finish (Option) Polished High Luster #8 Mirror Finish (Option) White Powder Coat (Option) Gold Powder Coat (Option)		
OUTPUT	179 Lumens Warm White (Approx 2,929k) <i>As per LM-79 report by an iAS Accredited Laboratory</i> *Also available in NEUTRAL WHITE (Approx 4,100k)		
LED	Wattage 4 Watts of LEDs Per Fixture Reflector SmoothBeam™ Technology - Wide Angle SAVE EVEN MORE! Pre-Installed Dimmer Control is Included! <i>Adjust from 1 Watt to 4 Watts of LED Output Per Fixture</i>		
LUMINOUS EFFICACY	43.8	Lumens Per Watt (Warm White)	

Scan QR code to see replacement process



TO REPLACE LED MODULE
Once Installed, unthread from fixture inside of the cab using our custom extraction tool. This allows future replacements without lowering the cab ceiling. This design is highly vandal resistant, yet allows for simple future replacement.

Power
Supply

MATERIAL	.060 Aluminum	 44BD ELEVATOR CONTROL, ELEVATOR ACCESSORY E329545
DIMMER	INCLUDED	
VOLTAGE	Input: 115 VAC (220VAC Also Available)	

Wiring

SECONDARY (OUTPUT) **Pre-harnessed with quick connects at power supply and at each fixture**

Emergency
(Optional)

ELS-SB™
Powers (2) two MiniBeam LED fixtures to meet ANSI 17.1 & ASME 17.3-2008 Elevator Code and mounts in MiniBeam power Supply.

EXCEEDS A17.3 4-HOUR RUNTIME CODE REQUIREMENT FOR EMERGENCY LIGHTING.



MAN-D-TEC, INC.
8175 E. PARADISE LANE P. 480.998.0325
SCOTTSDALE, AZ 85260 F. 480.998.0318

1.800.944.6263
WWW.MANDTEC.COM