



SOLOBEAM

REVISION: D

EFFECTIVE: 4/2014

# SOLOBEAM<sup>®</sup>

LED DOWNLIGHT FIXTURES FOR ELEVATORS



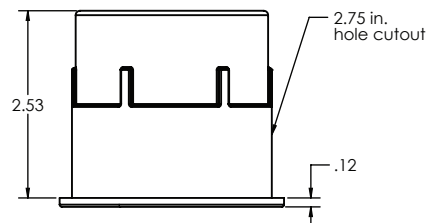
**PATENTED  
PRODUCT**

## SOLOBEAM by Man-D-Tec<sup>®</sup>

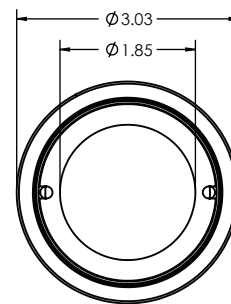
**PATENTED, HIGH PERFORMANCE LED LIGHTING SYSTEM,  
DESIGNED SPECIFICALLY FOR ELEVATOR APPLICATIONS.**

Warm white 4 watt LED output that produces 269 lumens per fixture. Systems include a dimmer control and prewired harnesses for easy installation. The fixture diameter and exclusive, easy-mount design is the same as our halogen series, allowing existing ceilings to be reused for upgrades to our LED systems. Our SmoothBeam™ technology produces a wide angle light output with even lighting (eliminates pixilation).

**Product Specifications on the back of page.**



SIDE VIEW



TOP VIEW

FOR OPTIONS SEE  
**ACCESSORIES**

FOR LIGHT CONFIGURATIONS SEE  
**LIGHTING MATRIX**



44BD  
ELEVATOR CONTROL,  
ELEVATOR ACCESSORY  
E329545



1.800.944.6263



WWW.MANDTEC.COM

**SOLOBEAM**

REVISION: D  
EFFECTIVE: 4/2014


**SOLOBEAM<sup>®</sup>**  
SPECIFICATIONS

Fixture  
(SOLOBEAM)

<b>MATERIAL</b>	<b>Aluminum Die Casting</b>		 <b>44BD</b> ELEVATOR CONTROL, ELEVATOR ACCESSORY E329545
<b>DIMENSIONS</b>	<b>2.53"</b> Overall Height <b>2.75"</b> Cutout Hole <b>3.03"</b> Overall Diameter <i>Uses Same Hole Cutout Size as Our H-DL™ Fixtures.</i>		
<b>MOUNTING</b>	<b>Retainer Clamp w/ "L" Bracket to Prevent Fixture Rotation</b>		
<b>FINISHES</b>	<b>Black</b> Powder Coat <b>STANDARD</b> <b>Brushed</b> #4 Silver Brushed Finish (Option) <b>Polished</b> High Luster #8 Mirror Finish (Option) <b>White</b> Powder Coat (Option) <b>Gold</b> Powder Coat (Option)		
<b>OUTPUT</b>	<b>269 Lumens</b> Warm White (Approx 2,871k) <b>337 Lumens</b> Neutral White (Approx 4,148k) <i>As per LM-79 report by an iAS Accredited Laboratory</i>		
<b>LED</b>	<b>Wattage</b> 4 Watts of LEDs Per Fixture <b>Reflector</b> SmoothBeam™ Technology - Wide Angle <b>SAVE EVEN MORE! Pre-Installed Dimmer Control is Included!</b> <i>Adjust from 1 Watt to 4 Watts of LED Output Per Fixture</i>		
<b>LUMINOUS EFFICACY</b>	<b>62.8</b> Lumens Per Watt (Warm White) <b>82.8</b> Lumens Per Watt (Neutral White)		

**TO REPLACE LED MODULE**  
Once Installed, unthread from fixture inside of the cab using our custom extraction tool. This allows future replacements without lowering the cab ceiling. This design is highly vandal resistant, yet allows for simple future replacement.

Power  
Supply

<b>MATERIAL</b>	<b>.060 Aluminum</b>		 <b>44BD</b> ELEVATOR CONTROL, ELEVATOR ACCESSORY E329545
<b>DIMMER</b>	<b>INCLUDED</b>		
<b>VOLTAGE</b>	<b>Input:</b> 115 VAC (220VAC Also Available)		

Wiring

**SECONDARY (OUTPUT)** **Pre-harnessed with quick connects at power supply and at each fixture**

Emergency  
(Optional)

**ELS-SB™**  
Powers (2) two SoloBeam LED fixtures to meet ANSI 17.1 & ASME 17.3-2008 Elevator Code and mounts in SoloBeam power Supply.  
**EXCEEDS A17.3 4-HOUR RUNTIME CODE REQUIREMENT FOR EMERGENCY LIGHTING.**



**MAN-D-TEC, INC.**  
8175 E. PARADISE LANE P. 480.998.0325  
SCOTTSDALE, AZ 85260 F. 480.998.0318

**1.800.944.6263**  
WWW.MANDTEC.COM