



TRIFECTA / LED-DL[®]

REVISION: F

EFFECTIVE: 9/2013

TRIFECTA[®]

LED DOWNLIGHT FIXTURES FOR ELEVATORS



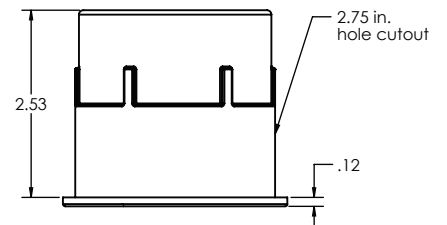
**PATENTED
PRODUCT**

TRIFECTA by Man-D-Tec[®]

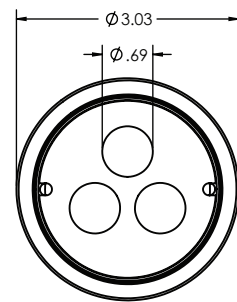
**PATENTED, HIGH PERFORMANCE LED LIGHTING SYSTEM,
DESIGNED SPECIFICALLY FOR ELEVATOR APPLICATIONS.**

Warm white 7 watt LED output that produces 341 lumens per fixture. Systems include a dimmer control and prewired harnesses for easy installation. The fixture diameter and exclusive, easy-mount design is the same as our halogen series, allowing existing ceilings to be reused for upgrades to our LED systems.

Product Specifications on the back of page.



SIDE VIEW



TOP VIEW

FOR OPTIONS SEE
ACCESSORIES

FOR LIGHT CONFIGURATIONS SEE
LIGHTING MATRIX



44BD
ELEVATOR CONTROL,
ELEVATOR ACCESSORY
E329545



1.800.944.6263

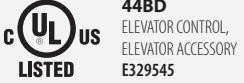

WWW.MANDTEC.COM

TRIFECTA / LED-DL®

REVISION: F
EFFECTIVE: 9/2013

TRIFECTA®
SPECIFICATIONS


Fixture
(TRIFECTA)

MATERIAL	Aluminum Die Casting		
DIMENSIONS	2.53" Overall Height 2.75" Cutout Hole 3.03" Overall Diameter <i>Uses Same Hole Cutout Size as Our H-DL™ Fixtures.</i>		
MOUNTING	Retainer Clamp w/ "L" Bracket to Prevent Fixture Rotation		
FINISHES	Black Powder Coat <i>STANDARD</i> Brushed #4 Silver Brushed Finish <i>(Option)</i> Polished High Luster #8 Mirror Finish <i>(Option)</i> White Powder Coat <i>(Option)</i> Gold Powder Coat <i>(Option)</i>		
OUTPUT	341 Lumens Warm White (Approx 2,985k) <i>As per LM-79 report by an iAS Accredited Laboratory</i>		
LED	Wattage 7 Watts of LEDs Per Fixture Reflector Focused Lens <i>SAVE EVEN MORE! Pre-Installed Dimmer Control is Included!</i> <i>Adjust from 1 Watt to 7 Watts of LED Output Per Fixture</i>		
LUMINOUS EFFICACY	48.7	Lumens Per Watt	

TO REPLACE LED MODULE

Once Installed, unthread from fixture inside of the cab using our custom extraction tool. This allows future replacements without lowering the cab ceiling. This design is highly vandal resistant, yet allows for simple future replacement.

Power
Supply

MATERIAL	.060 Aluminum	
DIMMER	<i>INCLUDED</i>	
VOLTAGE	Input: 120 VAC (220VAC Also Available)	

Wiring

SECONDARY (OUTPUT) Pre-harnessed with quick connects at power supply and at each fixture

Emergency
(Optional)

ELS-LED®2C
Powers (2) two Trifecta LED-DL fixtures during a normal power failure.

EXCEEDS A17.3 4-HOUR RUNTIME CODE REQUIREMENT FOR EMERGENCY LIGHTING.



MAN-D-TEC, INC.

8175 E. PARADISE LANE
SCOTTSDALE, AZ 85260

P. 480.998.0325
F. 480.998.0318

1.800.944.6263

WWW.MANDTEC.COM