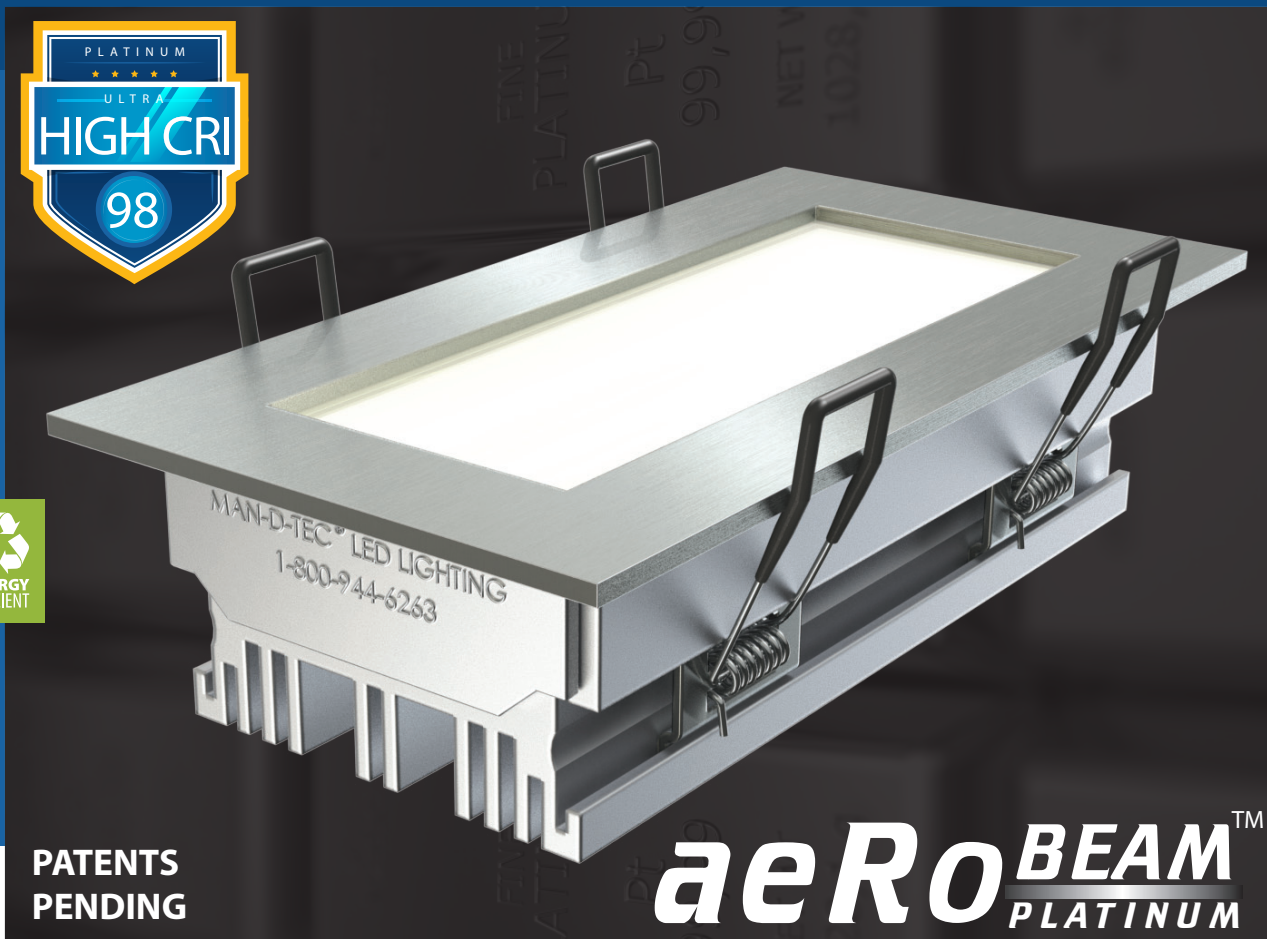




AEROPLAT
REVISION: A
EFFECTIVE: 1/2015

AEROBEAM™ PLATINUM

LED LIGHT FIXTURES FOR ELEVATORS



PATENTS
PENDING

aeRoBEAM™ PLATINUM

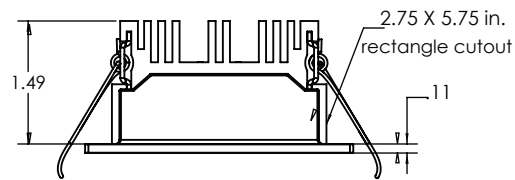
AEROBEAM PLATINUM by Man-D-Tec®

**THIS ULTRA-HIGH CRI FULL SPECTRUM LIGHTING CAN
DRAMATICALLY IMPROVE THE APPEARANCE OF OBJECTS.**

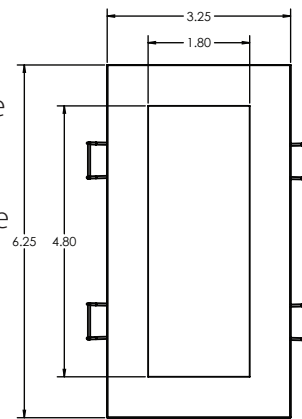
Man-D-Tec's highest CRI (Color Rendering Index) lighting product, the aeRoBeam PLATINUM has a CRI of **98**, indicating that it is able to produce white light that approximates the quality of halogen or incandescent lighting. Warm white 6 watt LED output produces 658 lumens per fixture (104.9 lumens per watt), making it one of the most efficient fixtures on the market today. The rectangular construction and wide angle beam produces light output with even lighting (eliminates pixilation).

Product Specifications on the back of page.

FOR LIGHT CONFIGURATIONS SEE
LIGHTING MATRIX



SIDE VIEW



FRONT VIEW



448D
ELEVATOR CONTROL,
ELEVATOR ACCESSORY
E329545



1.800.944.6263




WWW.MANDTEC.COM

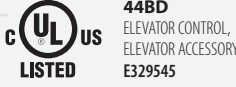
AEROPLAT

REVISION: A
EFFECTIVE: 1/2015

AEROBEAM™ PLATINUM

SPECIFICATIONS

<h2>Fixture (AEROBEAM PLATINUM)</h2>	<p>MATERIAL</p>	<p>Aluminum Casting</p>			
	<p>DIMENSIONS</p>	<p>1.49" 2.75" x 5.75" 3.25" x 6.25"</p>		<p>Overall Height Cutout Hole (Rectangle) Overall Dimension</p>	
	<p>MOUNTING</p>	<p>Spring Clips</p>			
	<p>FINISHES</p>	<p>Black Brushed Polished White Gold</p>		<p>Powder Coat STANDARD #4 Silver Brushed Finish <i>(Option)</i> High Luster #8 Mirror Finish <i>(Option)</i> Powder Coat <i>(Option)</i> Powder Coat <i>(Option)</i></p>	
	<p>OUTPUT</p>	<p>658 Lumens</p>		<p>Warm White (Approx 3,052k) As per LM-79 report by an iAS Accredited Laboratory</p>	
	<p>LED</p>	<p>Wattage Reflector</p>		<p>6 Watts of LEDs Per Fixture Wide Angle SAVE EVEN MORE! Pre-Installed Dimmer Control is Included! <i>Adjust from 1 Watt to 6 Watts of LED Output Per Fixture</i></p>	
<p>LUMINOUS EFFICACY</p>	<p>104.9</p>	<p>Lumens Per Watt</p>			

<h2>Power Supply</h2>	<p>MATERIAL</p>	<p>.060 Aluminum</p>		
	<p>DIMMER</p>	<p>INCLUDED</p>		
	<p>VOLTAGE</p>	<p>Input: 115 VAC (220VAC Also Available)</p>		

<h2>Wiring</h2>	<p>SECONDARY (OUTPUT)</p>	<p>Pre-harnessed with quick connects at power supply and at each fixture</p>
-----------------	----------------------------------	-------------------------------------------------------------------------------------

<h2>Emergency (Optional)</h2>	<p>ELS-LED-2C</p>	<p>Powers (2) two aeRoBeam fixtures to meet ANSI 17.1 & ASME 17.3-2008 Elevator Code. EXCEEDS A17.3 4-HOUR RUNTIME CODE REQUIREMENT FOR EMERGENCY LIGHTING.</p>
-----------------------------------	--------------------------	--------------------------------------------------------------------------------------------------------------------------------------------------------------------------------



MAN-D-TEC, INC.

8175 E. PARADISE LANE
SCOTTSDALE, AZ 85260

P. 480.998.0325
F. 480.998.0318

1.800.944.6263

WWW.MANDTEC.COM